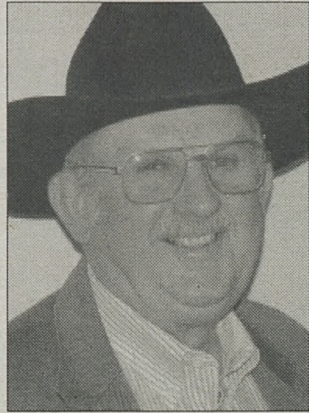
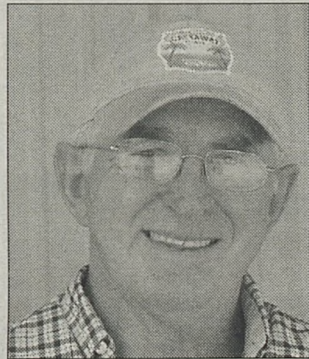


2009 Colorado County Fair Directors



JERRY HENNEKE '86
President



DAVID PILSNER '01
Director



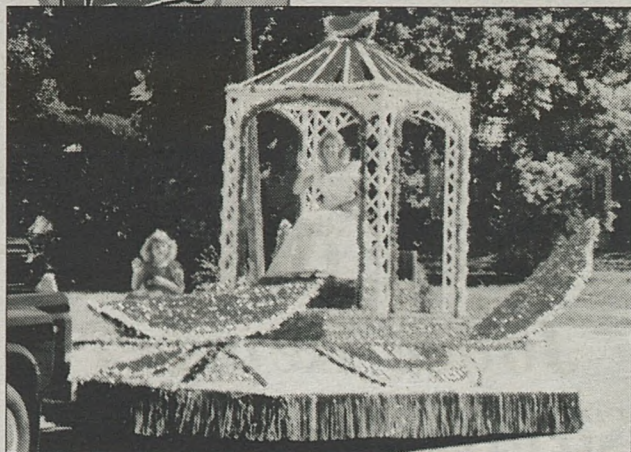
KAYLEE BRUNE '04
Director



MELISSA KILPATRICK '06
Executive Director



Gail Gertson '08
Secretary



Looking Back: This beautiful float from the McDade Watermelon Festival was an entry in the 1989 Fair Parade.

Welcome to the 2009 Colorado County Fair!

Aloha, it's Luau Time at the 31st annual Colorado County Fair. We extend a cordial invitation to everyone to join us for a fun-filled 4 days.

The event would not have been possible for the past 31 years without the dedication of our wonderful sponsors, committee persons, & volunteers. Community pride is the reason so many of these people work so hard to present this great event. Supporting our youth, our agriculture and our commitment to education bring out the best in people.

I would like to thank each & every one of you for your participation, because without you, it would be impossible to continue to increase the amounts & number of scholarships awarded to the deserving youth of Colorado County.

We have a great line-up of entertainment for all ages – Livestock Show & Sale, Garden & Modified Tractor Pull, Antique Tractor Pull & Show, Buttons the Clown, County Store, Bar-B-Q Cook-off, Petting Zoo, Creative Homemaking Department, Arts & Crafts, a great parade, spectacular Midway Carnival rides & great musical entertainment. We are pleased to announce a new event Sunday morning in the Rodeo Arena – Ranch Sorting. Beginning at 8:00 a.m. there will be a free clinic for any youth 16 years old & under to learn the basics of Ranch Sorting & have the opportunity to win belt buckles. At approximately 9:00 a.m., the main event will begin. With the support of the Ag Complex & other key individuals, we have added another entrance to the parking area for your convenience.

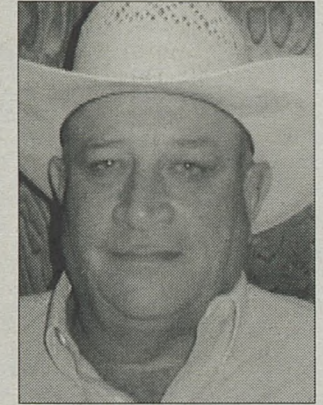
On behalf of the Board of Directors & members of the Colorado County Fair Association, thank you for your past support & I look forward to seeing you at the 31st Colorado County Fair.

Aloha,

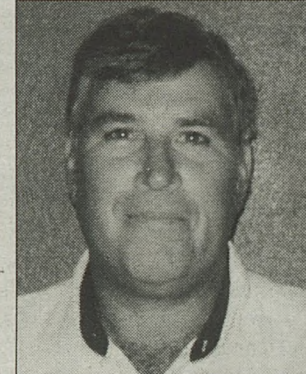
Jerry Henneke Sr., President



PAMELA POTTER '81
Executive Director Emeritus



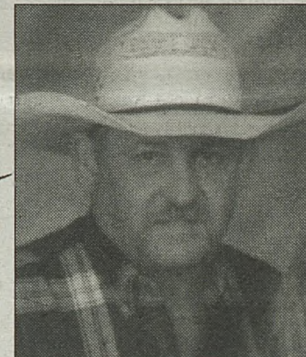
HENRY SCHNEIDER '00
Immediate Past President



DARRELL GERTSON '01
Second Vice President



JANE MEL DAHL '03
Treasurer



KARL ED VALENTA '05
First Vice President



HEATH WEISHUHN '05
Director

ADMISSION PRICES

SEASON PASS

(in advance from queen contestants) \$20.00

THURSDAY (9/10/2009) at gate \$25.00

Thursday	\$10.00
Friday	\$10.00
Saturday	\$10.00
Sunday	\$5.00
Students (6-12)	\$5.00 daily
Ages 5 and under	Free

FOR TICKETS OR INFO
CALL FAIR OFFICE
AT (979) 732-9266

or

www.ColoradoCountyFair.org



Fair Parade Saturday, Sept. 12

Entries are being sought for the 31st Annual Colorado County Fair Parade to be held Saturday, September 12 beginning at 10 a.m. in downtown Columbus. The theme for this year's fair and parade is "Aloha It's Luau Time."

First second and third place ribbons will be given in each category. Two special rosettes will be given, one to the "Best Overall" entry and one to the "Best Themed" entry. Anyone not having received an entry form in the mail can pick one up at Potter's Western Store, 2106 Hwy. 71 in Columbus or the Columbus Area Chamber of Commerce office at 425 Spring St.

Entry forms and additional information are also available by calling parade chairman Kim Dyer at 979-732-8385. The deadline to enter the parade is Wednesday, Sept. 9 no, exceptions.